

## Hazard Warnings

Hazard warnings in this manual indicate potential harm to the user or the product. For the person interacting with the product, the level of risk includes consequences ranging from slight, up to lethal injuries. As for the product, disobeying the warnings may cause damage to the equipment and/or void the warranty. Therefore, said warnings are made apparent to instruct and warn the user, which precautions have to be made prior to performing any actions described in this manual. The user must read and be familiar with the manual, before performing any tasks as described in this manual.

Hazard warnings in this manual are presented in these three forms:

**WARNING:** These warning notices refer to personal safety. Failure to obey these notices could result in personal injury or death.



# WARNING

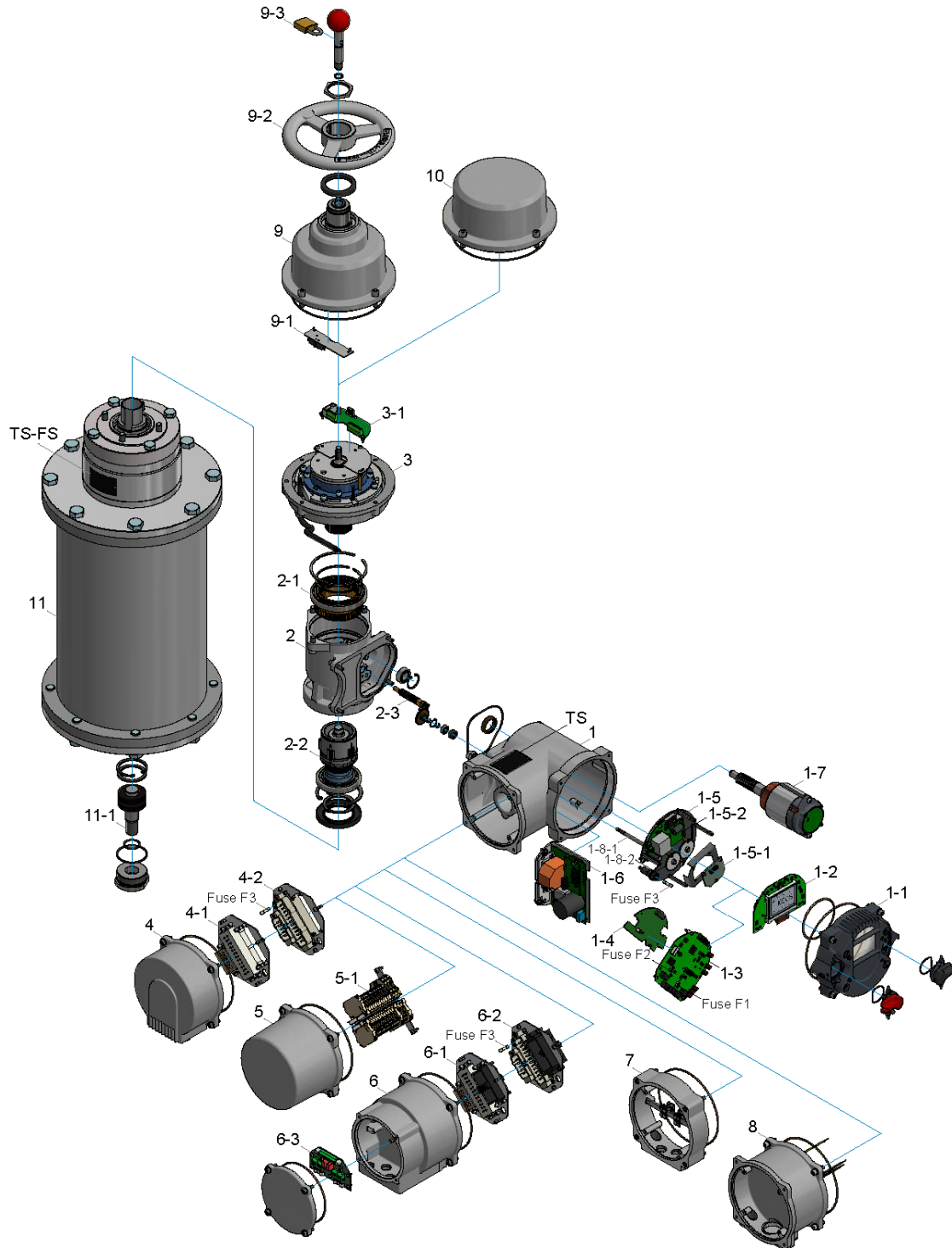
**CAUTION:** General precautions must be made. Failure to obey these notices could result in personal injury and/or equipment damage.



# CAUTION

**NOTE:** Directs the user's attention to essential information.

## Spare parts ACTUSMART (ex)(r)CM06 FS



**CAUTION:** When ordering spare parts, you **must** provide the **serial number** (look type shield or status menu S6). Use only original spare parts supplied by SCHIEBEL. Using other parts will render the warranty void. Illustrations may differ from actual spare parts.



Asm.	No.	Description
1		E-case
	1-1	Control unit cover
	1-2	Display circuit board
	1-3	Logic circuit board
	Fuse-F1	Micro fuse 1A
	Fuse-F2	Micro fuse 4A
	1-4	Expansion board (bus, relay)
	1-5	Multiturn sensor assembly
	1-5-1	Multiturn sensor
	1-5-2	24VDC Step-Down Converter
	1-6	BLDC Power Electronics
	Fuse-F3	Fuse 5AT (16AT for 24V actuators with BLDC version 200)
	1-7	Motor
	1-8-1	Sensor shaft
	1-8-2	Gear
2		Mech. case
	2-1	Worm gear
	2-2	Output shaft
	2-3	Helical cut pinion gear
3		Failsafe Brake Assembly
	3-1	Failsafe PCB
4		Plug cover
	4-1	Plug frame customer side (socket)
	4-2	Plug frame actuator side (pins)
5		Terminal box cover
	5-1	Terminal block
6		Entire bus plug cover with plugs & circuit board
	6-1	Bus plug frame customer side (socket)
	6-2	Bus plug frame actuator side (pins)
	6-3	Bus connection board
7		Additional ring bus (Ex)
8		400V module
TS		Type plate

Asm.	No.	Description
9		Handwheel Cover
	9-1	Switch for Manual Mode
	9-2	Handwheel
	9-3	Padlock
10		Failsafe Brake Cover
11		Failsafe Unit
	11-1	Spindle Pin
TS-FS		Type plate Failsafe Unit